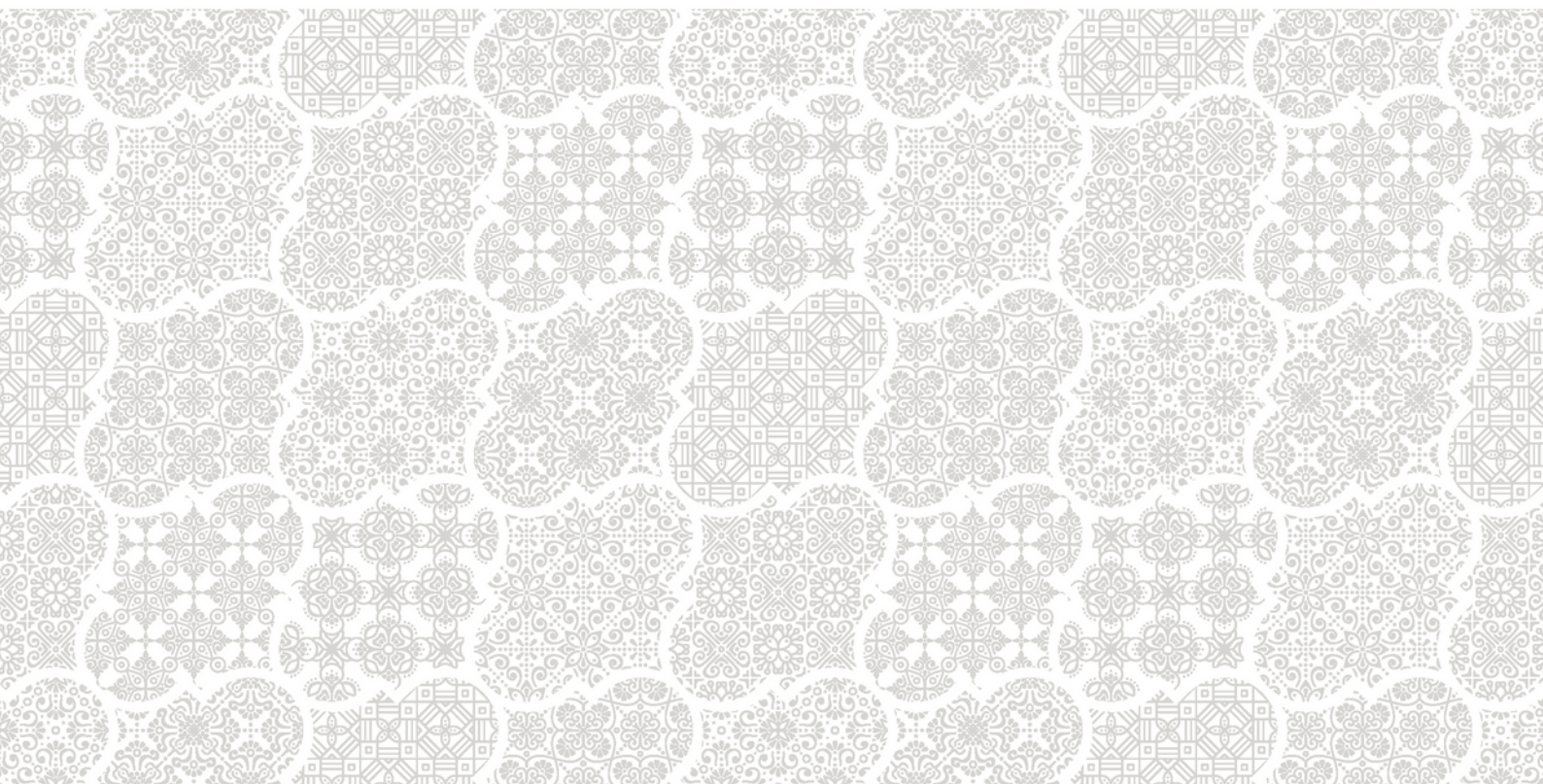


JSE2101

Soleram

Arr. Josu Elberdin

SSAA divisi, unaccompanied



MUZIKSEA

Arranger's notes

This is an arrangement of a traditional Riau lullaby, commissioned by the Indonesian Archipelago Singers of Indonesia in 2014. The choir wanted to incorporate a western harmonic colour to a precious work of Asian folklore. The work begins with a sweet intro of colourful and endearing harmonies, in which the voices go "rocking" the person being lulled to sleep.

A dialogue between the voices then take place, passing the melody through different melodic heights and textures, with a modulation to gain more tension and energy. The pieces end with a rich harmony, a triumphant dream in the shine of the night. I invite you to travel to a beautiful Indonesian night with a melody that will capture your heart.

To my friends The Archipelago Singers, with best wishes
Originally arranged for SATB and commissioned by The Archipelago Singers

Soleram

A lullaby from the Riau province on the island of Sumatra
For unaccompanied SSAA div. chorus

Indonesian Folksong
Arranged by Josu Elberdin

Dolce ♩ = 60
mf

Soprano 1
Oo

Soprano 2
Oo

Alto 1
Oo

Alto 2
mf
Oo

4

S1
Ah

S2
Ah

A1
Ah

A2
Ah



Unauthorised duplication
of this score is illegal

8 *molto legato*
p
 S1 Oo
 S2 Oo
 A1 Oo
 A2 Oo

12 *mf*
 S1 So - le - ram, so - le - ram. So - le - ram, a - nak yang ma -
 S2 So - le - ram, so - le - ram. So - le - ram, a - nak yang ma -
 A1 So - le - ram, so - le - ram. So - le - ram, a - nak yang ma -
 A2 So - le - ram. So - le - ram, a - nak yang ma -

16
 S1 nis a-nak ma - nis ja-ngan-lah di - ci - um, sa-yang ka-lau di - ci-um me-rah-lah pi-pi-
 S2 nis a-nak ma - nis ja-ngan-lah di - ci - um, sa-yang ka-lau di - ci-um me-rah-lah pi-pi-
 A1 nis a-nak ma - nis ja-ngan-lah di - ci - um, sa - yang di - ci-um me-rah-lah pi-pi-
 A2 nis a-nak ma - nis ja-ngan-lah di - ci - um, sa - yang di - ci-um me-rah-lah pi-pi-

This page is intentionally left blank.

To purchase the score, please visit
www.muziksea.com

MUZIKSEA

32 *mf*

S1 Sa - tu, du - a, ti - ga, dan em - pat li - ma, e - nam, tu - juh, de - la -

S2 Sa - tu, du - a, ti - ga, dan em - pat li - ma, e - nam, tu - juh, de - la -

A1 Sa - tu, du - a, ti - ga, dan em - pat li - ma, e - nam, tu - juh, de - la -

A2 Sa - tu, du - a, ti - ga, dan em - pat li - ma, e - nam, tu - juh, de - la -

36

S1 pan. Ka-lau tu - an da-pat ka-wan ba - ru, sa-yang ka-wan la - ma di - lu - pa - kan jang

S2 pan. Ka-lau tu - an da-pat ka-wan ba - ru, sa-yang ka-wan la - ma di - lu - pa - kan jang

A1 pan. Ka-lau tu - an da-pat ka-wan ba - ru, sa - yang ka-wan la - ma di - lu - pa - kan jang

A2 pan. Ka-lau tu - an da-pat ka-wan ba - ru, sa - yang ka-wan la - ma di - lu - pa - kan jang

40

S1 an. Ka-lau tu - an da-pat ka-wan ba - ru, sa-yang ka-wan la - ma di -

S2 an. Ka-lau tu - an da-pat ka-wan ba - ru, sa-yang ka-wan la - ma di -

A1 an. Ka-lau tu - an da-pat ka-wan ba - ru, sa - yang ka-wan la - ma di -

A2 an. Ka-lau tu - an da-pat ka-wan ba - ru, sa - yang ka-wan la - ma di -

44 *non dim.* **rit.** **f** 5

S1
lu - pa - kan jang - an. So - le - ram, so - le - ram.

S2
lu - pa - kan jang - an. So - le - ram, so - le - ram.

A1
lu - pa - kan jang - an. So - le - ram, so - le - ram.

A2
lu - pa - kan jang - an. So - le - ram, so - le - ram.

Pasaia, 20 November 2017